




PRO-NUTRITION®
 ——— FLATAZOR ———

Pont-Réan BP38001
 35580 Guichen, FRANCE
 +33 (0)2 99 42 84 00

www.pro-nutrition.flatazor.com
pro-nutrition.flatazor@sopral.com



PRO-NUTRITION®
FLATAZOR

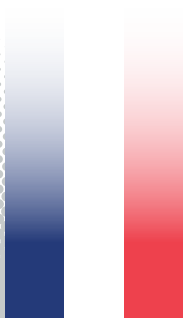
PROTECT

Plants & Well-being



Plants & Well-being


Dietetic food formulated to deal with
the health disorders of cats and dogs



Made in France

Your dog or your cat has a delicate metabolism, with dysfunctions that can lead to different disorders. You must feed him/her with a specific food adapted to his/her particular nutritional needs.

Pro-Nutrition nutritionists have developed the Protect line. Composed of dietetic food, it is formulated to perfectly meet the nutritional needs in relation to the most common health issues experienced by cats and dogs, and to offer well-being. Our dietetic food complies with the nutritional requirements established and validated by the French and European authorities for particular nutritional purposes.



To reinforce the efficacy of our food and because Nature is our best ally, we have used a wide diversity of plants in all our formulas of Protect food. Their beneficial properties on health are well recognized, and their use has been known for centuries.

PLANT ACTIVE BENEFIT

Plants are a leading response to provide the organism with essential nutrients for the daily well-being of your pet in a natural way.

Food plays an essential role in your pet's well-being. As a consequence, at Pro-Nutrition, we know it is crucial that your dog or your cat enjoys his/her meal.

That is why, the palatability of our food is at the heart of our priorities, in order to guarantee a tasty meal for your pet and offer him / her well-being and happiness.


MARINE ACTIVE BENEFIT

Found exclusively in Pro-Nutrition food, these biological active marine ingredients, rich in Omega 3 essential fatty acids, amino acids and biopeptides, play a fundamental role in the nutritional balance and well-being of your pet.



Protect food is entirely produced:

 with **GMO-free plant raw materials**

 with ingredients specifically selected for their hyperdigestible and hypoallergenic properties **(no wheat or soya).**

For more than 50 years, we have focused all our knowledge and passion into the formulation of high quality food in order to offer well-being and happiness to your cats and dogs.

All Pro-Nutrition food is manufactured in our own factory in Brittany (West of France) and our factory is exclusively dedicated to the production of super-premium dry food for cats and dogs.

We are a human-sized company and we are deeply committed to the sustainable development:



We take part in the economic development of our region Brittany,



We favor local raw materials to reduce our carbon footprint,



We are devoted in an energy-saving policy.



• Paris

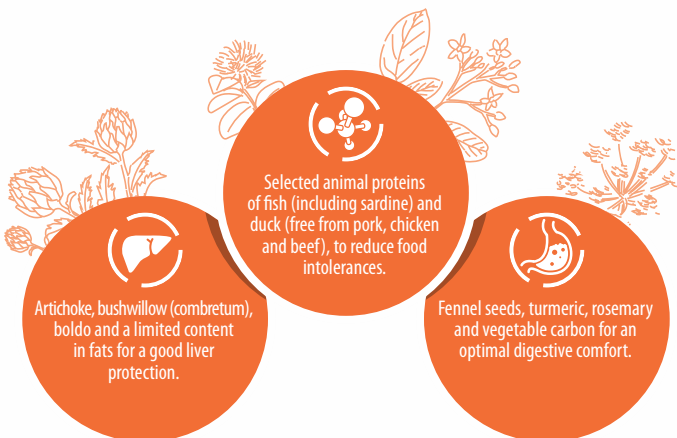
**Pro-Nutrition
Factory
Pléchâtel**



DIGEST

HYPOALLERGENIC - LOW FAT

Complete dietetic food for dogs with particular nutritional needs **“Reduction of ingredient and nutrient intolerances”**. **“Support of lipid metabolism in the case of hyperlipidaemia”**.



Ingredients: Dehydrated sardine proteins (14% min.). Rice. Dehulled oats. Dehydrated fish (4% min.). Tapioca. Sweet potato. Apple fibres. Peas. Dehydrated duck proteins (4% min.). Broad bean fibres. Duck fat. Linseed. Animal protein hydrolysates. Fish autolysates (1%). Clay. Brewer’s yeast. Psyllium fibres. Fish oil. Fennel seeds. Fructo-oligosaccharides. Sea salt. Artichoke. Rosemary. Bushwillow (combretum). Boldo. Turmeric. Vegetable carbon. Rosemary extracts. Aloe vera. Vitamins and trace elements.

It is recommended that a veterinarian’s opinion be sought before use or before extending the period of use.

 **Bags of 2 kg & 12 kg**



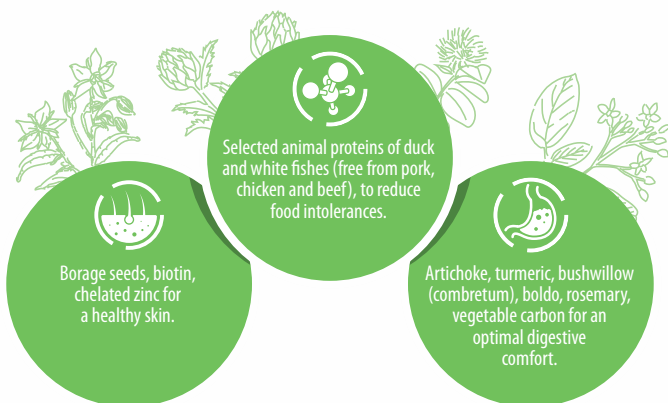
Selected and limited protein sources: dehydrated sardine protein, dehydrated duck protein, dehydrated fish (without dehydrated chicken, pork, beef protein). Selected carbohydrate sources: rice, dehulled oats, tapioca, sweet potato. Sources of omega 3: linseed, fish oil. Low level of fat.



DERMATO

HYPOALLERGENIC - SKIN REINFORCEMENT

Complete dietetic food for dogs with particular nutritional needs **“Support of skin function in the case of dermatosis and excessive loss of hair”**. **“Reduction of ingredient and nutrient intolerances”**. This food is also suitable as a support for **“Nutritional restoration, convalescence”**.



Ingredients: Dehydrated duck proteins (15% min.). Dehulled oats. Rice. Tapioca. Duck fat. Sweet potato. Apple fibres. Potato proteins. Linseed. Dehydrated fish (3% min.). Peas. Brewer's yeast. Animal protein hydrolysates. Wild white fish protein hydrolysates (including cod, anglerfish). Fish autolysates (1%). Borage seeds. Clay. Fructo-oligosaccharides. Fish oil. Sea salt. Artichoke. Turmeric. Bushwillow (combretum). Boldo. Rosemary. Vegetable carbon. Rosemary extracts. Vitamins and trace elements.

It is recommended that a veterinarian's opinion be sought before use or before extending the period of use.

 **Bags of 2 kg & 12 kg**

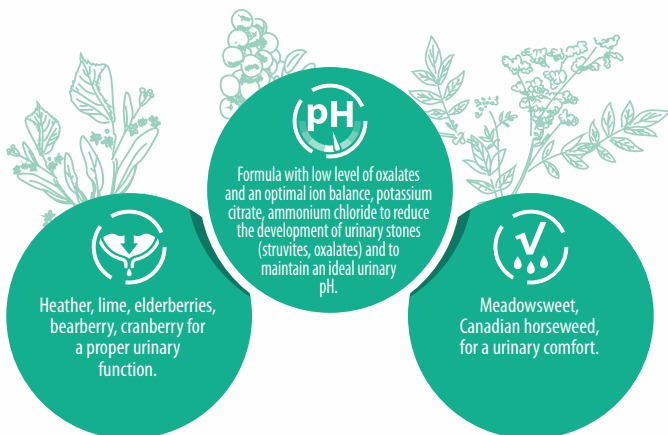
High level of linoleic acid (LA) and of sum of eicosapentaenoic acid (EPA) and docosahexaenoic acid (DHA): sum of EPA + DHA = 0.16%. Selected and limited protein sources: dehydrated duck proteins, dehydrated fish, wild white fish protein hydrolysates (including cod, anglerfish), potato proteins (without dehydrated chicken, pork, beef protein). Selected carbohydrate sources: dehulled oats, rice, tapioca, sweet potato. Sources of omega 6 and 3: borage seeds, duck fat, linseed, fish oil. High energy density (3838 kcal/kg), high concentrations of essential nutrients and highly digestible ingredients.



URINARY

PREVENTS OXALATE CALCIUM STONES - URINARY COMFORT

Complete dietetic food for dogs with particular nutritional needs **“Reduction of oxalate stones formation”**. **“Reduction of struvite stone recurrence”**.



Ingredients: Dehydrated animal proteins (17% min.) (chicken, duck, turkey, pork). Rice. Duck fat. Peas. Potato starch. Corn gluten. Corn. Dehulled oats. Apple fibres. Egg. Animal protein hydrolysates. Linseed. Broad bean fibres. Sea salt. Fish oil. Fish autolysates (1%). Brewer's yeast. Clay. Potassium citrate. Ammonium chloride. Methionine. Dicalcium phosphate. Fructo-oligosaccharides. Potassium chloride. Heather. Lime. Canadian horseweed. Meadowsweet. Elderberries. Bearberry. Calcium sulphate. Cranberry. Rosemary extracts. Vitamins and trace elements.

It is recommended that advice from a veterinarian be sought before use and before extending the period of use.

 **Bags of 2 kg & 12 kg**

Urine alkalisng substances: potassium citrate (0.5%). Urine acidifying substances: ammonium chloride. Low level of calcium oxalate.



OBESITE

LOW CALORIE - SATIETY SATISFACTION

Complete dietetic food for dogs with particular nutritional needs **"Reduction of excessive body weight"**. **"Regulation of glucose supply (*Diabetes mellitus*)"**.



Sweet potato (low glycemic index), L-carnitine, coconut oil for a loss of fat mass while maintaining a muscle mass.



Formula rich in proteins and low in fats (2885 kcal/kg), psyllium and broad bean fibres to give the same volume of ration and reduce the feeling of hunger.



Artichoke, chia seeds, vegetable carbon for an optimal digestive comfort and a healthy liver.



Ingredients: Dehydrated animal proteins (29% min.) (chicken, duck, turkey). Broad bean fibres. Corn. Tapioca. Sweet potato. Apple fibres. Peas. Corn gluten. Animal protein hydrolysates. Duck fat. Beet pulps. Linseed. Brewer's yeast. Fish autolysates (1%). Clay. Chia seeds. Psyllium fibres. Artichoke. Fructo-oligosaccharides. Coconut oil. Fish oil. Vegetable carbon. Sea salt. Rosemary extracts. L-carnitine. Vitamins and trace elements.

It is recommended that a veterinarian's opinion be sought before use or before extending the period of use.

 **Bags of 2 kg & 12 kg**

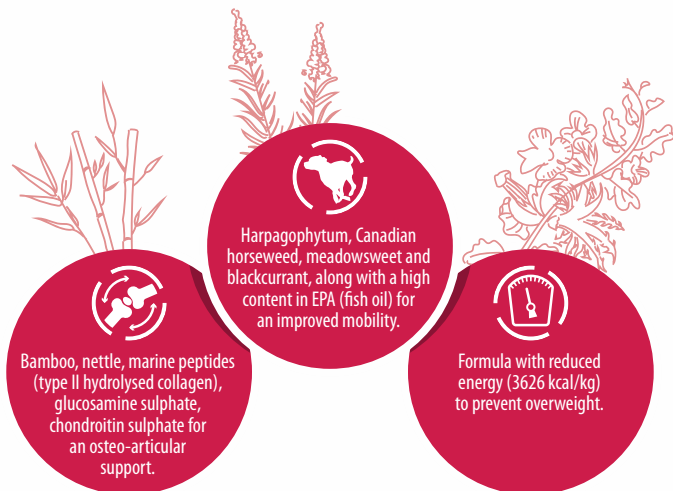
Carbohydrate sources: corn, tapioca, sweet potato, peas. Sources of omega 3: linseed, fish oil, chia seeds. Low level of mono- and disaccharides.



OSTEO

IMPROVED MOBILITY - OSTEO-ARTICULAR SUPPORT

Complete dietetic food for dogs with particular nutritional needs **“Support of the metabolism of joints in the case of osteoarthritis”.**



Ingredients: Dehydrated animal proteins (25% min.) (chicken, duck, turkey). Corn. Linseed. Rice. Peas. Apple fibres. Broad bean fibres. Animal protein hydrolysates. Fish oil. Duck fat. Fish autolysates (1%). Rapeseed oil. Brewer's yeast. Clay. Fructo-oligosaccharides. Marine peptides (type II hydrolysed collagen). Sea salt. Harpagophytum. Bamboo. Canadian horseweed. Meadowsweet. Nettle. Blackcurrant. Glucosamine sulphate. Rosemary extracts. Chondroitin sulphate. Vitamins and trace elements.

It is recommended that advice from a veterinarian be sought before use and before extending the period of use.

 **Bags of 2 kg & 12 kg**





SENIOR +

CARDIAC SUPPORT - IMPROVED MOBILITY

Complete dietetic food for dogs with particular nutritional needs **"Support of heart function in the case of chronic cardiac insufficiency"**. **"Nutritional restoration, convalescence"**. This food is also suitable as a **"Support of skin function in the case of dermatosis and excessive loss of hair"**.



Harpagophytum, Canadian horseweed, meadowsweet, blackcurrant, bamboo and nettle, along with a high content in EPA (fish oil) and hydrolysed collagen for an osteo-articular support and an improved mobility.



Limited content in sodium (0.21%) and phosphorus (0.55%) and a controlled intake of proteins for the cardiac function support and the kidney good health.



Artichoke, bushwillow (combretum), boldo, turmeric, rosemary and vegetable carbon for an optimal digestive function.



Ingredients: Dehydrated animal proteins (24% min.) (duck mini 4%, chicken, turkey, pork). Corn. Linseed. Tapioca. Rice. Duck fat. Apple fibres. Sweet potato. Animal protein hydrolysates. Fish autolysates (1.5%). Clay. Fish oil. Brewer's yeast. Calcium sulphate. Fructo-oligosaccharides. Calcium carbonate. Methionine. Marine peptides (type II hydrolysed collagen). Harpagophytum. Artichoke. Bamboo. Bushwillow (combretum). Boldo. Turmeric. Rosemary. Vegetable carbon. Canadian horseweed. Meadowsweet. Nettle. Blackcurrant. Glucosamine sulphate. Chondroitin sulphate. Taurine. Rosemary extracts. Vitamins and trace elements.

It is recommended that advice from a veterinarian be sought before use and before extending the period of use.

 **Bags of 2 kg & 12 kg**

Selected hyperdigestible ingredients: dehydrated duck proteins, tapioca, rice, sweet potato. Sources of omega 3: linseed, fish oil. High energy density (4103 kcal/kg), high concentrations of essential nutrients and highly digestible ingredients. High level of linoleic acid (LA) (2.36%) and of sum of eicosapentaenoic acid (EPA) and docosahexaenoic acid (DHA): sum of EPA + DHA = 0.28%.



DIGEST

HYPOALLERGENIC - SKIN REINFORCEMENT

Complete dietetic food for cats with particular nutritional needs **“Reduction of ingredient and nutrient intolerances”**. **“Support of skin function in the case of dermatosis and excessive loss of hair”**. This food is also suitable as a support for **“Nutritional restoration, convalescence”**.



Borage seeds, biotin, chelated zinc for a healthy skin.



Selected animal proteins of duck, sardine and white fishes (free from pork, chicken and beef), to reduce food intolerances.



Artichoke, turmeric, bushwillow (combretum), boldo, rosemary for an optimal digestive comfort.



Ingredients: Dehydrated duck proteins (13% min.). Dehulled oats. Duck fat. Dehydrated sardine proteins (10% min.). Peas. Rice. Apple fibres. Tapioca. Linseed. Potato starch. Animal protein hydrolysates. Potato proteins. Wild white fish protein hydrolysates (including cod, anglerfish). Borage seeds. Brewer's yeast. Fish autolysates (0.6%). Clay. Psyllium fibres. Fish oil. Ammonium chloride. Methionine. Sea salt. Fructo-oligosaccharides. Artichoke. Turmeric. Bushwillow (combretum). Boldo. Rosemary. Potassium chloride. Taurine. Yucca. Rosemary extracts. Vitamins and trace elements.

It is recommended that a veterinarian's opinion be sought before use or before extending the period of use.



Bag of 2 kg

Selected and limited protein sources: dehydrated sardine proteins, dehydrated duck proteins, wild white fish protein hydrolysates (including cod, anglerfish), potato proteins (without dehydrated chicken, pork, beef protein). Selected carbohydrate sources: oats, rice, tapioca, potato starch. Sources of omega 6 and 3: borage seeds, duck fat, linseed, fish oil. High level of linoleic acid (LA) and of sum of eicosapentaenoic acid (EPA) and docosahexaenoic acid (DHA): sum of EPA + DHA = 0.33%. High energy density (4070 kcal/kg), high concentrations of essential nutrients and highly digestible ingredients.



URINARY

PREVENTS STRUVITE STONES - URINARY COMFORT

Complete dietetic food for cats with particular nutritional needs "Reduction of struvite stone recurrence". "Reduction of oxalate stones formation".

pH

Formula with an optimal ion balance, ammonium chloride, potassium citrate to maintain an ideal urinary pH and reduce the development of urinary stones (struvites, oxalates).



Heather, lime, elderberries, bearberry, cranberry for a proper urinary function.



Meadowsweet, Canadian horseweed for a urinary comfort.



Ingredients: Dehydrated animal proteins (20% min.) (chicken, duck, turkey, pork). Rice. Duck fat. Corn gluten. Peas. Tapioca. Potato starch. Dehydrated sardine proteins. Apple fibres. Animal protein hydrolysates. Linseed. Fish oil. Brewer's yeast. Sea salt. Calcium sulphate. Fish autolysates (0.6%). Clay. Methionine. Potassium citrate. Ammonium chloride. Potassium chloride. Fructo-oligosaccharides. Heather. Lime. Canadian horseweed. Meadowsweet. Elderberries. Bearberry. Cranberry. Taurine. Yucca. Rosemary extracts. Vitamins and trace elements.

It is recommended that advice from a veterinarian be sought before use and before extending the period of use.

 **Bags of 2 kg & 8 kg**

Urine alkalisng substances: potassium citrate (0.5%). Urine acidifying substances: ammonium chloride. Low level of calcium oxalate.



OBESITE

LOW CALORIE - SATIETY SATISFACTION

Complete dietetic food for cats with particular nutritional needs **"Reduction of excessive body weight"**. **"Regulation of glucose supply (*Diabetes mellitus*)"**.



Psyllium and broad bean fibres to give the same volume of ration and reduce the feeling of hunger.



Formula rich in proteins, low in fats (3290 kcal/kg), L-carnitine for a loss of fat mass while maintaining a muscle mass.



Artichoke, chia seeds, vegetable carbon for an optimal digestive comfort and a good liver protection.



 Bag of 2 kg

Ingredients: Dehydrated animal proteins (28% min.) (chicken, duck, turkey, pork). Broad bean fibres. Corn gluten. Rice. Tapioca. Apple fibres. Duck fat. Linseed. Peas. Dehydrated fish. Animal protein hydrolysates. Fish autolysates (0.6%). Clay. Psyllium fibres. Brewer's yeast. Artichoke. Fish oil. Ammonium chloride. Chia seeds. Potassium chloride. Sea salt. Calcium sulphate. Methionine. Taurine. Fructo-oligosaccharides. Vegetable carbon. Yucca. Rosemary extracts. L-carnitine. Vitamins and trace elements.

It is recommended that a veterinarian's opinion be sought before use or before extending the period of use.

Carbohydrate sources: rice, tapioca, peas. Sources of omega 3: linseed, fish oil, chia seeds. Low level of mono- and disaccharides.



CARE 8+

RENAL SUPPORT - IMPROVED MOBILITY

Complete dietetic food for cats with particular nutritional needs "Support of renal function in case of chronic renal insufficiency". "Support of the metabolism of joints in the case of osteoarthritis". This food is also suitable as a support for "Nutritional restoration, convalescence". "Support of heart function in the case of chronic cardiac insufficiency". "Support of skin function in the case of dermatosis and excessive loss of hair".



Harpagophytum, Canadian horseweed, meadowsweet, blackcurrant, bamboo and nettle, along with a high content in DHA (fish oil) and hydrolysed collagen for an osteo-articular support and an improved mobility.



Limited content in sodium (0.26%) and phosphorus (0.55%) and a controlled intake of proteins for the cardiac function support and the kidney good health.



Canadian horseweed, meadowsweet, heather, lime, elderberry, cranberry and bearberry, along with an optimal ionic balance for a good urinary function.



 Bag of 2 kg

Ingredients: Dehydrated animal proteins (20% min.) (chicken, duck, turkey, pork). Corn. Peas. Corn gluten. Duck fat. Tapioca. Apple fibres. Potato starch. Rice. Animal protein hydrolysates. Linseed. Broad bean fibres. Fish oil. Calcium carbonate. Clay. Brewer's yeast. Fish autolysates (0,6%). Methionine. Ammonium chloride. Fructo-oligosaccharides. Calcium sulphate. Marine peptides (type II hydrolysed collagen). Taurine. Canadian horseweed. Meadowsweet. Harpagophytum. Vegetable carbon. Bamboo. Artichoke. Boldo. Bushwillow. Turmeric. Rosemary. Heather. Lime. Elderberries. Bearberry. Nettle. Cranberry. Blackcurrant. Yucca. Rosemary extracts. Vitamins and trace elements.

It is recommended that advice from a veterinarian be sought before use and before extending the period of use.

Protein sources: dehydrated chicken, duck, turkey and pork proteins, corn gluten. Sources of omega 3: linseed, fish oil. High energy density (4132 kcal/kg), high concentrations of essential nutrients and highly digestible ingredients. High level of linoleic acid (LA) (2.65%) and of sum of eicosapentaenoic acid (EPA) and docosahexaenoic acid (DHA): sum of EPA + DHA = 0.49%.

Average analytic characteristics



DIGEST



DERMATO



URINARY



OBESITE



OSTEO



SENIOR+

		DIGEST	DERMATO	URINARY	OBESITE	OSTEO	SENIOR+
Crude protein	%	27	26	27	29	26	26
Crude fat	%	11	16	16	9	15	15.5
Crude fibre	%	5.5	2.5	3	12	5	2.5
Inorganic matter	%	7	7	7.5	6.5	6.5	6.5
Metabolisable energy	kcal/kg	3400	3838	3787	2885	3626	3833
Calcium	%	1.2	1.25	0.85	1.2	1.1	1.1
Phosphorus	%	0.85	0.85	0.7	0.9	0.85	0.55
Sodium	%	0.39	0.36	0.75	0.25	0.3	0.21
Potassium	%	0.8	0.65	1.1	0.7	0.75	0.6
Magnesium	%	0.14	0.1	0.08	0.12	0.14	0.16
Linoleic acid	g/kg	12	18.5	22.1	12.3	23.7	23.6
Alpha-linolenic acid	g/kg	10	10.4	6.2	4.2	23.8	11.5
EPA + DHA	g/kg	5.1	1.6	2.7	1.5	7.1	2.8
Lysine	g/kg	16	15.1	10.9	19.4	16.8	13.5
Methionine	g/kg	5.8	4.8	8.8	4.2	4	6.7
L-carnitine	mg/kg	-	-	-	50	-	-
Taurine	mg/kg	-	-	-	-	-	450
Copper	mg/kg	20	20	19	22	13,6	20
Zinc	mg/kg	200	197	195	200	200	200
including zinc chelate	mg/kg	72	72	72	72	72	72
Manganese	mg/kg	76	86	63	73	67	72
Iodine	mg/kg	3.3	3.1	2.8	2.8	2.8	2.8
Selenium	mg/kg	0.52	0.5	0.5	0.5	0.5	0.5
of which organic selenium	mg/kg	0	0.06	0.15	0.08	0.14	0.15
Vitamin A	UI	13600	13600	12000	13600	13600	17500
Vitamin D3	UI	900	900	785	900	900	1260
Vitamin E	UI	250	250	300	250	400	300
Vitamin B1	mg/kg	84	84	74	84	84	104
Vitamin B2	mg/kg	10.4	10.4	9	10.4	10.4	11
Pantothenic acid	mg/kg	42	42	37	42	42	44
Vitamin B6	mg/kg	9.6	9.6	8.4	9.6	9.6	10.5
Vitamin B12	mg/kg	0.22	0.22	0.2	0.22	0.22	0.22
Vitamin PP	mg/kg	32	32	28	32	32	43
Biotin	mg/kg	2.4	2.4	2.1	2.4	2.4	2.7
Folic acid	mg/kg	2.2	2.2	1.9	2.2	2.2	2.3
Choline chloride	mg/kg	1725	1725	1725	1725	1725	1800

The contents indicated in the above tables are the average values contained in the food.

Average analytic characteristics




DIGEST



URINARY



OBESITE



CARE 8+

Crude protein	%	29	33	36	30
Crude fat	%	19	16	10	15,5
Crude fibres	%	2.5	2	12	4
Inorganic matter	%	7.5	7	7.5	6
Metabolisable energy	kcal/kg	4070	3998	3290	3901
Calcium	%	1.25	0.9	1.2	1
Phosphorus	%	1	0.7	1	0.55
Sodium	%	0.5	0.7	0.5	0.26
Potassium	%	0.7	1	0.9	0.59
Magnesium	%	0.11	0.08	0.12	0.09
Linoleic acid	g/kg	20	20	12	26.5
Alpha-linolenic acid	g/kg	10	6.4	7	6.5
EPA + DHA	g/kg	3.3	3.3	1	4.9
Lysine	g/kg	16.5	14.2	21	16.3
Methionine	g/kg	9.4	10.6	8.6	9.6
L-carnitine	mg/kg	-	-	50	-
Taurine	mg/kg	1800	1800	1800	2000
Copper	mg/kg	19	20	22	19
Zinc	mg/kg	134	137	152	134
including zinc chelate	mg/kg	32	32	32	32
Manganese	mg/kg	85	79	85	78
Iodine	mg/kg	2.3	1.8	1.8	1.6
Selenium	mg/kg	0.5	0.5	0.47	0.5
of which organic selenium	mg/kg	0.06	0.06	0	0.12
Vitamin A	UI	17600	17600	17600	19800
Vitamin D3	UI	1600	1600	1600	1800
Vitamin E	UI	300	300	300	400
Vitamin B1	mg/kg	96	96	96	108
Vitamin B2	mg/kg	4	4	4	4,5
Pantothenic acid	mg/kg	13.9	13.9	13.9	15.6
Vitamin B6	mg/kg	4.8	4.8	4.8	5.4
Vitamin B12	mg/kg	0.024	0.024	0.024	0.027
Vitamin PP	mg/kg	52	52	52	58.5
Biotin	mg/kg	1.6	1.6	1.6	1.8
Folic acid	mg/kg	1	1	1	1.1
Choline chloride	mg/kg	3525	3525	3525	3525